



# Rio Grande Community Farm

a non-profit, organic farm on public land

# History of RGCF

---

- *Anderson Fields were purchased by the City of Albuquerque in 1995, renamed Los Poblanos Fields Open Space*
- *Rio Grande Community Farm was formed in 1997 to manage 50 acres of the 138-acre urban farm*
- *Twelve years of our annual Maize Maze event*
- *Three years of growing organic food for the community*



*Our mission is to connect people, earth, water and wildlife in an urban setting by farming sustainably, enhancing wildlife habitat, educating our community, and providing fresh, certified organic food to diverse populations*

# Environmental Sustainability



- *Conserve water and energy*
- *Prevent water and air pollution*
- *Build soil fertility*
- *Maintain wildlife habitat*

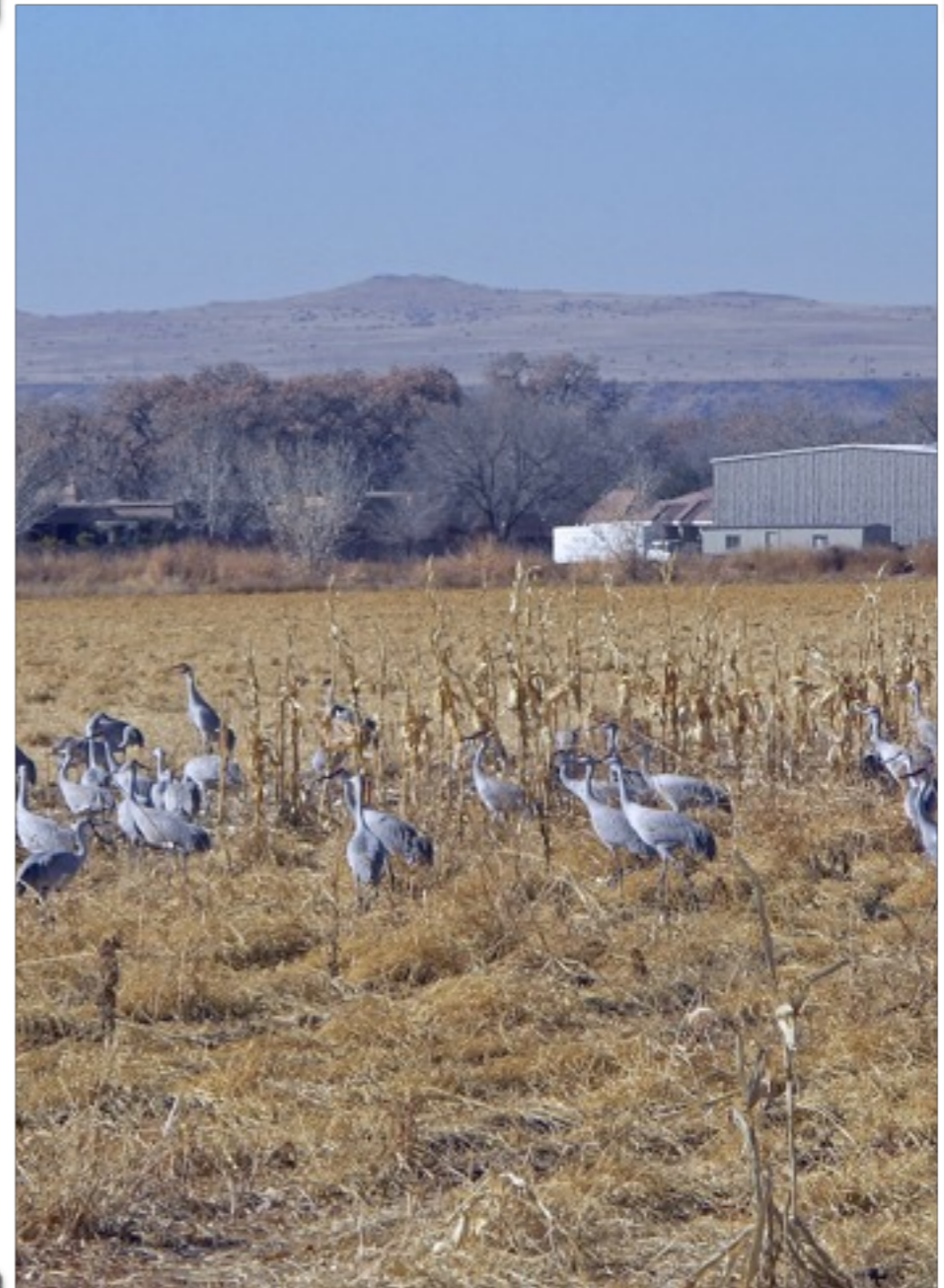
# Organizational Sustainability

---

- *Pay a living wage*
- *Offer health insurance*
- *Provide a career path*
- *Work with other farms and organizations*
- *Support ongoing education of staff*

# Enhancing Wildlife Habitat

- *Maintain urban open space*
- *25% of our crops are literally for the birds*
- *Provide habitat for migrating and native wildlife*



# Educating our Community



- *Serve as an organic demonstration farm and community garden*
- *Provide service-learning experiences for students of all ages*
- *Offer organic gardening workshops*

# Food for Diverse Populations

- *Albuquerque Public Schools*
- *Food pantries (5%) and non-profits serving vulnerable populations (20%)*
- *Local restaurants, La Montanita Coop, and other grocery stores*



# What makes RGCF a “community” farm?

---

- *Partnership with City of Albuquerque Open Space Department*
- *Contract with Albuquerque Public Schools*
- *Commitment to provide food to vulnerable populations*
- *Community garden and education programs*
- *Relationships with local businesses and other farms*

# Future Farming Goals



- *Demonstrate sustainable farming methods including New Mexico's first organic sub-surface drip irrigation system*
- *Increase our yearly harvest from 7,000 to 40,000 pounds of fresh, certified organic produce by 2014*

# Food for the Community

- *Donate 5% of our harvest to food pantries and sell 20% to non-profits serving vulnerable populations*
- *Next year, 16,000 servings will be provided to those who don't normally have access to high quality fruits and vegetables*



# Future Program Goals

- *Improve our Community Garden*
- *Create partnerships with schools and colleges*
- *Offer more workshops and education programs*
- *Create a labor pool to be shared with other farms*
- *Develop a farmers' co-op*



# Resource Development Plan

---

- *Continue to apply for grants*
- *Continue to offer community events*
- *Strengthen relationships with local, state and federal representatives*
- *Obtain additional sponsorships from local businesses*
- *Recruit more individual donors*
- *Expand our membership*

# We invite you to grow with us!

- *Serve on our board*
- *Become a member*
- *Volunteer*
- *Sponsor the Maze*
- *Spread the word*
- *Support our programs*



*Thank you!*